

# THE Portobello REPORTER

Quarterly: SUMMER 2016

Delivered in and around Portobello; circulation 12,500  
Also available online on [www.porty.org.uk](http://www.porty.org.uk)

INSIDE  
THIS  
ISSUE

- Library programme P3
- Life is a highway P4
- Making a splash P5
- What's on P6
- Fantastic fossil P7

The independent voice of Portobello Your Community Newspaper  
produced by local people since 1980.

## CAN THIS COMMUNITY BUY BELLFIELD CHURCH?

**CRUCIAL** community spaces are vanishing: spaces needed for the everyday activities that support the well-being of our kids, parents and grandparents, spaces where none are excluded because of a lack of money.

With the merger of the three Church of Scotland congregations into one Portobello and Joppa Parish Church at St Philip's, first Rosefield's St James's was put on the market, and now Bellfield Old Parish Church is to follow suit.

After discussions with the Church and in the community, the first public meeting to address this was convened on 16th April at Tribe Porty. It was standing room only and ended with the formation of Friends of Bellfield, with a 12-strong committee and 50 people volunteering to contribute time and skills to support an attempt to achieve a community buy-out of Bellfield church and halls.

Luckily, in the fortnight before the public meeting, the Scottish Land Fund (intended to help fund communities to secure vital assets), and also



Friends of Bellfield gather outside the church they hope to acquire for the community.

the Community Right to Buy (intended to help communities secure time to raise the funds to buy these assets), were both extended to cover urban areas of Scotland.

Subsequently, Friends of Bellfield asked the General Trustees of the Church of Scotland to delay putting the church on the market so that we can secure the finance, and consult widely to ensure that, if successful, the buildings meet community needs and help Portobello to

flourish.

However, the Trustees did not support this request. In response, Friends of Bellfield are moving as swiftly as possible to set up a company limited by guarantee, with a strong local membership and broad community support; seek funding from the Scottish Land Fund to carry out a feasibility study; consult to develop a vision of how Bellfield can best meet community needs; use the Community Right to Buy to

request that Scottish Government Ministers give the community time to raise the funds.

This could be the first attempt by an urban community to use the Community Right to Buy legislation.

For further information see [www.bellfield.scot](http://www.bellfield.scot) and to support the proposal, email: [friendsofbellfield@gmail.com](mailto:friendsofbellfield@gmail.com)

Justin Kenrick  
Friends of Bellfield

## PETITION HELPS SAVE ALLOTMENTS

**THE** campaign to save the Craigentenny & Telferton Allotments was long and hard-fought, and culminated in the Planning Committee meeting on 14th April when, on the recommendation of the Planning Officer, councillors unanimously rejected Avant Homes' application to build houses on the allotments site.

Graham Purnell of the Allotments Association tells us: "The Planning Officer reported that there were 281 objections, only three comments in support and a petition of 3,032 signatures (at the time of submission) opposing the application and added: '...so we have roughly 3,300 in objection to it', meaning that every signature on the 38Degrees online petition counted towards the total number of

objections presented to council".

This was a significant departure from the way Planning has previously treated petitions, counting them as just one objection to an issue, no matter how many people have signed them.

Graham says: "On behalf of the Craigentenny & Telferton Allotment Committee, the local community and the wider allotment movement, we thank each and every signatory of our petition. The petition will remain open, if only so that it can be accessed and witnessed on the 38Degrees site by the Scottish Government Reporter, should the developer decide to appeal". The developer has three months from the date of the decision in which to submit an appeal.

## GREEN BELT BATTLE

**EDI** Group Ltd held a second local consultation on the development of Brunstane Greenbelt for housing, on 18th May. The Save Brunstane Greenbelt Campaign urged people, on [www.change.org](http://www.change.org), to boycott it and Cllr David Walker, who had arranged the first consultation, posted: "I feel this would be a complete waste of time. I don't believe EDI are serious about consulting the community or taking on board what local people have to say". A planning application will be submitted if the Scottish Government Reporter approves building on this part of Edinburgh's greenbelt.

## BINGO HALL DEMOLITION PLAN

**DEVELOPERS** have applied for permission to demolish a C-listed landmark building in Portobello and build a block of 21 flats with parking. The Art Deco former George Cinema at 14 Bath Street has been a prominent feature since 1938, and is an increasingly rare example of 1930s buildings. For details see [www.edinburgh.gov.uk/planning](http://www.edinburgh.gov.uk/planning) quoting 16/02052/FUL and 16/02052/LBC; any objections should be made to both applications. The Community Council invites comments on its website [www.portobellocc.org](http://www.portobellocc.org)

## BEACH BONANZA!

**HERE** Comes the Summer, a fun event for all the family organised by the City of Edinburgh Council, takes place on Saturday 2nd July from 1-4pm on Portobello Promenade outside the Swim Centre, and on the beach. Go along and try lots of the sports and activities that are on offer over the holidays and beyond. There are expected to be water sports, such as paddleboards and kayaks, and loads of other fun activities: pony rides, climbing wall, surf simulator, bungee run, equaliser, speed shot, athletics, bocchia, circuits, arts and crafts, tug of war, races, mobile football pitch, music, face painting and much more. There will also be a market place for local agencies to advertise their services free.

For the last three years this event has been free, but this year, due to cuts in funding, there will be a charge of £1 per wrist band, which will get you onto everything. These funds will go towards next year's event and pay for some of this year's activities. There will also be a Free Zone.

Liz Wilson

# PORTY PROFILE No. 62 ROBERT GATLIFF

**HOW** many residents of Portobello have lived on the Pacific Island of Tonga? Not many is probably the answer. If you know that Tonga is not a volcanic island but one that has been elevated from the sea bed by a collision of Pacific tectonic plates then you have probably been talking to Robert Gatliff.



Photo by Nigel Archdale

Robert and his wife, Miranda moved to Portobello in 1985, but were posted to Tonga for two years in the late 1980s by the British Geological Survey.

Drilling into the earth's crust and decoding the geological, biological and environmental DNA of our planet is what Robert does for a living. He explains that it is like using a tree's growth rings to decipher its life, but goes back millions of years.

Robert sits in his bay window and talks with enthusiasm and authority about all that is happening beneath the crust of our planet in a way that makes him someone you could listen to all evening.

He is Director of Energy and Marine Geoscience at the British Geological Survey and is in enormous demand for his impartial opinions on the environmental and scientific aspects of fracking and wind farming. You may have heard him speaking on the British media, or as the impartial expert witness in last year's community meeting on fracking held in Portobello Town Hall.

In his free time Robert has immersed himself in the minutiae of our community. He was a member of Portobello Community Council and served as its Secretary, and then Chair for over 12 years. He was also the PCC representative of Joppa Tennis.

Given Robert's fascination with geology it is not surprising that he has chosen to live in close proximity to one of Scotland's finest geological phenomena, Joppa Rocks. If you want to find out more about this natural wonder on our doorstep head along Musselburgh Road and you will get a spectacular view. Check tide times first, as they are only visible at low tide. The information board explaining their formation is another of Robert's contributions to our community. He also produced the leaflet about Joppa Rocks that can be found online at [www.edinburghgeolsoc.org/downloads/rigsleaflet\\_joppa.pdf](http://www.edinburghgeolsoc.org/downloads/rigsleaflet_joppa.pdf)

Robert's geological exploration work took him to six continents in less than 300 days in 2015.

The old adage "if you want a job done, ask a busy person" truly sums him up.

Nigel Archdale

# ON THE BEAT

IN recent weeks there have been a number of reported instances of vandalism in Hope Lane North, Windsor Place, Brighton Place and Adelphi Grove. These seem to involve youths targeting cars and private property.

Graffiti is also a re-occurring issue; some appears to be the work of one individual who tags his work 'Manny'. Williamfield Square, Fishwives Causeway and Hope Lane North have been targeted, as have business premises on the high street.

We have responded with dedicated anti-social behaviour patrols in order to identify offenders and deter further incidents.

Three people have been identified for a number of acts of vandalism in the area surrounding Brighton Park and now face criminal proceedings. We have further positive lines of enquiry to pursue in identifying more suspects, and will continue to work with our partner agencies, such as the council CCTV team, to assist in evidence gathering.

At this time we ask people to be vigilant and report any incidents to Portobello Police Station or to call Police Scotland, telephone number 101.

Dealing with anti-social behaviour in the East of Edinburgh remains a priority and we will continue to do all we can to minimise further disruption to the community.

The Community Policing Team

# FIND YOUR VOICE IN PORTY

THE world's largest public speaking and leadership training organisation is coming to Portobello and you are invited. The inaugural meeting of a new Toastmasters International club is taking place at The Dalriada, 77 Promenade, Edinburgh, EH15 2EL on Wednesday, 22nd June at 7.15-9.30pm. This initial meeting is free and you can get your ticket on Eventbrite at: <http://bit.ly/1OaCe0n>.

Toastmasters is a not-for-profit organisation that offers inexpensive communication and leadership training in friendly and supportive self-help clubs. The methodology is so successful that they now have around 15,500 clubs in 137 countries.

Toastmasters' Director for Scotland, Portobello-based Eoin McDunphy, says: "It doesn't matter if you are a professional speaker, or a student, a trainee manager or a non-native English speaker: you will improve at Toastmasters and can gain eight globally recognised qualifications in the process. Research shows that Toastmasters earn about a third more than their peers over a lifetime. For an investment of around £100 a year you get two hours of supportive training and practice every fortnight".

Come along on 22nd June to experience Toastmasters for yourself, free of charge.

Penny Haywood Calder

# NEWS IN BRIEF

**THE NEW PARK** to be built on part of the current Portobello High School and St John's Primary site, once the new primary school is built, will be named Treverlen Park. Treverlen is the oldest known name of the village and estates now known as Duddingston. The chosen design for the park can be seen on the [Portobello & Craigmillar Neighbour Partnership website](http://www.edinburgh.gov.uk/planning-enforcement).

**PORTOBELLO TOWN HALL:** The upper levels are closed for Health & Safety reasons. Over time the chairs have become damaged: some have detached from their frames, some have metal showing and there are no backs on others. This presents hazards which could result in injury.

**PLANNING ISSUES:** For information on the planning enforcement process and making enquiries online see [www.edinburgh.gov.uk/planning-enforcement](http://www.edinburgh.gov.uk/planning-enforcement). Written enquiries can also be made.

Planning Aid Scotland offers free impartial and professional advice on getting to grips with the planning system - see [www.pas.org.uk](http://www.pas.org.uk)

To comment on, or get involved with live planning applications, or to search any planning history of sites that interest you, see [www.edinburgh.gov.uk/planning](http://www.edinburgh.gov.uk/planning)

## TOMMY SHEPPARD MP

**LOCHEND**  
1st Friday | 12pm-1pm  
Restalrig Lochend Community Hub, 198 Restalrig Road

**CRAIGMILLAR**  
1st Friday | 5pm-6pm  
Office, 18 Niddrie Mains Road

**CENTRAL**  
3rd Friday | 5pm-6pm  
Quaker Meeting House  
7 Victoria Terrace

**PORTOBELLO**  
3rd Saturday | 11am-12pm  
Office, 94 High Street

SURGERY TIMES

Constituency Office: 94 High Street, Portobello, EH15 1AN Tel: (0131) 661 8023

Part Time Hub Office: 18 Niddrie Mains Road, Open Mon - Wed 1.30pm - 4.30pm

Westminster Office: House of Commons, London, SW1A 0AA Tel: (0207) 219 6653

94 High Street, Portobello 0131 661 8023

[www.tommysheppardmp.scot](http://www.tommysheppardmp.scot)

[tommysheppard.mp@parliament.uk](mailto:tommysheppard.mp@parliament.uk)

TommySheppardSNP @TommySheppard

ESTIMATES FREE

## DOUGLAS BROWN & SON & GRANDDAUGHTER

**Plumbers & GasFitters**

24 hour service

22 Lee Crescent, Edinburgh EH15 1LW  
Tel: 0131 657 1655 Mob: 07973 678961

## GRAHAM SWINTON TILING

Specialising in All Aspects of Tiling

A professional service with excellent workmanship and attention to detail no matter how big or small the job is.

For a Free Quote Call  
0131 669 2232 or 07507 485228

42 Coillesdene Crescent, Joppa

WE are very excited about the theme for this year's summer holiday reading challenge: for the first time it centres around the work of one author, the brilliant and timeless Roald Dahl. The Big Friendly Read has been organised in collaboration with the Roald Dahl estate, as part of the Roald Dahl centenary celebrations. Characters from his books, illustrated by Quentin Blake, will be used by the Reading Agency to design the challenge, based on "invention, mischief and friendship, as explored in Dahl's most famous books". Chocolate Factories and Giant Peaches may also feature in our programme of children's activities. Ask staff for details or see our Facebook page.



We will be relaunching our teenage book group after the holidays. If you are aged between 12 and 15 and love reading and talking about books, Lesley at the library will give you all the information you need.

We fully support Dementia Friendly Portobello and are really pleased to announce that the brilliant Michelle Burke will be performing her *Step Into My Parlour* show in the library on Tuesday 14th June at 2pm. This quirky mix of traditional and music hall songs, family stories and old housekeeping tips is ideally suited to an older audience, including people living with dementia and their carers. The show is appearing thanks to the Festival Theatre and the Forget Me Not Project.

Do you have some creative work that you would like to display? Are you part of an art or photography group that would like to promote its work? If so, we have a free bookable area available to individuals or groups. Contact staff for details and to reserve your spot.

Our book group meets in the library on the first Tuesday of every month at 6.30pm, when we will discuss:

- 5th July: *Look Who's Back* by Timur Vermes.
- 2nd August: *Midnight's Children* by Salman Rushdie..
- 6th September: *Hand Me Down World* by Lloyd Jones.

All books will be available from the library. If you are interested, please ask for details.

Paul Hudson

## THANKS FROM THE PARTNERSHIP

**NEWSFLASH** - Around 300 folk voted at this year's 'You Decide 2016' event and 20 out of 25 projects were successful. Full details are on the Neighbourhood Partnership web page.

The Portobello & Craigmillar Neighbourhood Partnership would like to take the opportunity to express its thanks to everyone who has helped us over the last year. Thank you to the: community, Community Councils, sub-group members, and everyone who took time to have their say in the Park consultation, or helped us allocate our local grants by voting on bids at the recent You Decide! event, our partners and everyone who attended our meetings.

We hope everyone enjoys this year's Here Comes the Summer event on the Promenade by the Swim Centre, on Saturday 2nd July. This year's School Holiday Programme will provide fun and activities for young people across the area. The next cycle of meetings begins at the end of the summer; see you all again then. Best wishes from the Portobello & Craigmillar Neighbourhood Partnership.

Mary Dunbar

## PORTOBELLO COMMUNITY COUNCIL A 'MODEL' COMMUNITY COUNCIL

**COMMUNITY** engagement by Portobello Community Council has been rated as excellent by the Scottish Community Development Centre, "representing an outstanding standard of performance and exemplifying excellent practice".

Following a detailed analysis of community engagement activities, the SCDC found that Portobello Community Council was "performing to a standard which is the model of its type" and recommended that it be replicated by community councils and other statutory and voluntary sector organisations across Scotland.

The SCDC report said: "Through conducting such strong engagement, PCC ensures that the local community has an opportunity to have their voice heard in decisions which directly impact on their lives.

"The excellent assessment, SCDC concluded, was largely due to the skills, knowledge, energy and enthusiasm of the PCC's members and their commitment to making local decision making and planning as transparent and accountable as possible for local people." Read the full report:- <http://bit.ly/1rXwBJq>

Keep in touch with the community council via the website ([www.portobellocc.org](http://www.portobellocc.org)), Facebook page ([www.facebook.com/PortobelloCommunityCouncil](http://www.facebook.com/PortobelloCommunityCouncil)) or Twitter feed (<https://twitter.com/portobellocc>). You can email [secretary@portobellocc.org](mailto:secretary@portobellocc.org) or write to us at the following address: % 14 Rosefield Ave, Portobello, Edinburgh EH15 1AU.

Geoff Lynn, PCC Chair

## YOUR MSPs

IN the 5th May elections the following Members of the Scottish Parliament were elected to represent this constituency: Ash Denholm, SNP won the constituency vote; the rest gained their seats from the Lothian Regional List vote; Jeremy Balfour, Conservative; Miles Briggs, Conservative; Kezia Dugdale, Labour; Neil Findlay, Labour; Alison Johnson, Greens; Gordon Lindhurst, Conservative; Andy Wightman, Greens. They have been elected to represent you and can be contacted at [www.parliament.scot/msps/current-msps.aspx](http://www.parliament.scot/msps/current-msps.aspx)

# McIntyres

- SOLICITORS •
  - ESTATE AGENTS •
  - LETTING AGENTS •
- 31 years continuous service**

"LOCAL KNOWLEDGE TO HELP LOCAL PEOPLE"

### OFFERING THE FOLLOWING SERVICES

- Free No Obligation Valuation Of Your Existing Property
- Free Quotation - Give Us The Opportunity To Match Or Beat ANY Quotation You Have From Other Agents
- A Special Property Sales Package Can Be Offered
- Employment Law Consultants

#### LETTING

Properties to Rent Always Required

#### MORTGAGES

The Best Mortgage To Suit Your Needs

*Your home is at risk if you do not keep up repayments on a mortgage or other loan secured on it, written details on request.*

\*\*\*\*\*



**Come in and meet**  
**Susan Gibson, George Sneath**  
**and Lisa Glendinning**

*Have a cup of tea or coffee and let them take the strain out of buying or selling a property for you*

\*\*\*\*\*

**10% OFF**

If you wish to put your property on the market, forward this advert after you have received our quote in writing and we will reduce our Estate Agents fees by 10%. Subject to a minimum fee of £500 and not available on any other offer.

**158 PORTOBELLO HIGH STREET,**  
**EDINBURGH EH15 1AH**  
**Tel: 0131-669 7218 • Fax: 0131-669 8352**  
Open; Monday to Friday - 8am to 5pm  
[www.mcintyresproperty.co.uk](http://www.mcintyresproperty.co.uk)  
e-mail: george, susan or lisa@mcintyresproperty.co.uk

## A local and friendly first class service

**Kristoffersen**  
CARPETS & FLOORING

*The friendly alternative*

[www.kristoffersencarpets.com](http://www.kristoffersencarpets.com)



- Award winning local company
- Friendly, professional staff
- Free, no obligation quotes & professional advice
- A choice of in-store or home visits
- Professionally trained, highly skilled fitters & joiners
- Moving furniture & uplift of existing floors

234 High St Portobello 0131 669 9800 96 Morningside Rd Morningside 0131 447 9800  
293 St John's Rd Corstorphine 0131 334 9800 20-22 Station Rd Newtongrange 0131 660 9799  
*Kristoffersen AtHome 0800 378 248*

Fresh and local food in your neighbourhood since 1920



280-284 Portobello High Street, Edinburgh  
Midlothian, EH15 2AT  
01316692850  
Book a table: [www.standrewsrestaurant.scot](http://www.standrewsrestaurant.scot)  
Order online: [www.standrewstakeaway.scot](http://www.standrewstakeaway.scot)



**High Tea offer - only £8.90**  
Fish & chips + pot of tea + salad and mushy peas



**Pizzas baked in fire wood oven**



**Fresh local fish every day**



**Gluten FREE Options**

Fish & chips, Pizzas, Pastas, Onion rings and more

Follow us:  
[facebook.com/standrewsrestaurant](https://www.facebook.com/standrewsrestaurant)

[twitter.com/standrewsfood](https://twitter.com/standrewsfood)  
[instagram.com/standrewsrestaurant](https://www.instagram.com/standrewsrestaurant)



**Life is a Highway**

WE were recently surprised to see a small flock of purple sheep grazing on purple and green grass at the M8 pyramids. We hadn't been indulging; the sheep were helping to promote World Autism Awareness Month.

As our eldest son was diagnosed with autism when he was 10 years old, we were especially appreciative of the four-legged adverts to help raise awareness of the condition.

Anybody who has been affected by Autism Spectrum Disorder will know what I mean when I say it's a bit like driving on the M8, an unpredictable and often frustrating journey on which you are never sure when it's going to end, and just when you think you can pick up some speed you get stuck in an epic jam.

That's just me though. My son, however, takes it in his stride. He has dealt with episodes of bullying with strength and resilience, and has seen enough smiley face stickers to decorate a stadium. He has run the gauntlet of the education system and gained several Highers and is now at college, with ambitions to progress to university.

He says: "I would say the hardest thing for parents is knowing whether their child will develop normally into adults with no signs of the disorder. I remember it was quite hard for me when I was around five. I had to cope with sensory overload and couldn't really communicate. I felt detached. Now though, life is completely different because I feel like I have a future".

It goes without saying that we're immensely proud of him and know it won't be long before he is literally in the driving seat!

LOCAL sustainable food production is one of the main areas of interest of PEDAL and was behind the setting up of the monthly market, on the first Saturday of the month. It was also intended to attract shoppers who do not usually shop in Portobello High Street to visit the permanent traders such as the butcher, delicatessen, fishmonger and greengrocer. In this way we contribute to a reduction in food miles and support local traders rather than the large supermarket suppliers. Unfortunately, the last greengrocer in the high street, Banana Republic, recently closed after the owner decided to concentrate on the wholesale market. This is a definite example of 'use it or lose it' and the loss diminishes the vitality of the high street, resulting in a shop unit with closed blinds instead of the colourful array of fruit that used to enliven this part of the town.

A couple of local residents are keen to look at the possibility of a community shop that would be owned, managed and staffed by members of the community, offering fruit and vegetables and based on a successful initiative in Bruntsfield. This is an excellent model to follow and is being further explored. It will require community support though, possibly crowd-funding, and much help if it is to be successful. Watch this space in the next Reporter.

Our own local food production is at the Donkeyfield Community Orchard, where we have many traditional Scottish apple trees along with other fruit trees and bushes. On our last work day we cleaned out a section of the Brunstane Burn, following the work of the Timebank in a lower part. This resulted in a trailer full of discarded rubbish and other items, including the almost obligatory shopping trolley. Thanks to all who took part.

Anyone can visit the orchard at any time and we have general sessions of caring for it on the last Saturday of the month between 10am and 2pm. We are also open as part of the Edinburgh-wide Power of Food Festival, from 10am-1pm on Saturday 18 June. We hope you will join us in this beautiful community space.

Stephen Hawkins, PEDAL

**SUSTAINABLE PORTY**

**GROWING ORGANIC**



with Susan Burns



GARDENS should now be heading towards a display of summer colour. I sow my own annual seeds, a mix of what I've saved from the previous year, what friends give me, and a few new ones that I order to try.

If walking through borders in winter, I step on clumps of perennials to avoid bulbs, but in summer I step on dying clumps of daffs to avoid emerging perennials - it doesn't seem to do them any harm. I do this to check for weeds, or for seedlings like foxgloves, feverfew and the odd tree seedling that I will move to where I want them to grow.

Apple, pear and plum trees can quickly become infested with woolly aphid during warm spells, but a pot of flowering mint placed next to them will attract hoverflies that will consume the aphids.

Tomatoes should be flowering now. If they're in a greenhouse, feed them with comfrey tea made by steeping the leaves in a bucket, or just place torn leaves around each plant; an alternative is seaweed extract. Container plants will also benefit from a regular feed. Sow fast-maturing plants such as lettuce, rocket and radishes every fortnight, and leave a few radishes to the crunchy seed-pod stage to add a different texture to a salad bowl.

Last year we bought a small plastic greenhouse to hold taller plants, as I was worried about wind damage, but the sun melted the joints and we lost plants that were tipped out of their pots. The lesson was to position the greenhouse away from hot sun and where there isn't even a puff of wind. Last year we trimmed shrubs immediately after flowering and lost plants this year that had no protection from wind.

House plants can benefit from an outdoor stay, but protect them from full sun for a while, or they'll bleach. If potting on houseplants into bigger pots, and you haven't any crocks to put in the bottom for drainage and to stop soil leaking out, used teabags work well.

Accidents in the garden can happen to anyone. I don't mind nicking my fingers with secateurs, but do get irritated when I cut through my headphones. Cutting through electric cable on a lawn mower or other machine is another matter altogether - it kills. Check cables carefully and always use a circuit breaker. Place the cable over your shoulder out of the way, making sure it is not a trip hazard. Slipping on wet paths can break an ankle or wrist or worse, so check for the build-up of algae and remove it with a stiff brush.

Our garden at 39 Nantwich Drive will be open on Saturday 6th and Sunday 7th August, 2-5pm. Entry £1 for charity.

**COMMUNITY IN ACTION**

CLLR MAUREEN CHILD will abseil from the Forth Rail Bridge on Sunday 12th June to raise funds for The Thistle Foundation in Craigmiller, one of her favourite local charities, which supports people with long-term disabilities and health conditions. "I'm terrified of heights", she says, "but they say I will be completely in control of the descent. So it should be a piece of cake!" To sponsor Maureen go to <https://thistlefoundation.everydayhero.com/uk/maureen-abseil>

DANIEL BARRETO, of the Rotary Club of Portobello, will cycle from Land's End to John O'Groats, starting on 6th June, to raise money for End Polio Now, Rotary's own charity which aims to completely eradicate this crippling disease. The project has been on-going since 1979 and polio is now restricted to Afghanistan and Pakistan. Polio tends to attack children and Daniel, like many parents, wants a world where every child can grow up healthy and happy. To sponsor him go to <http://uk.virginmoneygiving.com/cyclerotary>

**Hundreds of mortgages all under one roof**

**Looking for a new mortgage?**

Why spend hours searching yourself? Talk to us and we'll search across the market to find you a great deal.

A mortgage is a loan secured against your home. Your home may be repossessed if you do not keep up repayments on your mortgage or any other debt secured on it.

**Four Seasons**  
Financial Services Ltd.

Call: 0131 657 4400 • Email: [Jacqui@fourseasonsfs.co.uk](mailto:Jacqui@fourseasonsfs.co.uk)  
Visit: 251 Portobello High Street, Edinburgh. EH15 2AW

**COUNCILLORS' SURGERIES**  
Portobello & Craigmillar Ward

**Cllr MAUREEN CHILD, Labour:**  
Portobello Library, most Mondays, at 7pm. To check availability or make a different appointment, call 529 3268 or mob 07718666481 or email [maureen.child@edinburgh.gov.uk](mailto:maureen.child@edinburgh.gov.uk)  
Receive regular Reports by email or view on [www.porty.org.uk](http://www.porty.org.uk)

**Cllr DAVID WALKER, Labour:**  
2nd and 4th Mondays of the month at Magdalene Community Centre, 5.30-6.15pm  
Cllr Walker may also be contacted at: City Chambers, High Street, Edinburgh EH1 1YJ, tel: 529 4972, or e-mail: [david.walker1@edinburgh.gov.uk](mailto:david.walker1@edinburgh.gov.uk)

# MAKING A SPLASH!



**• VISITORS TO THE POOL**

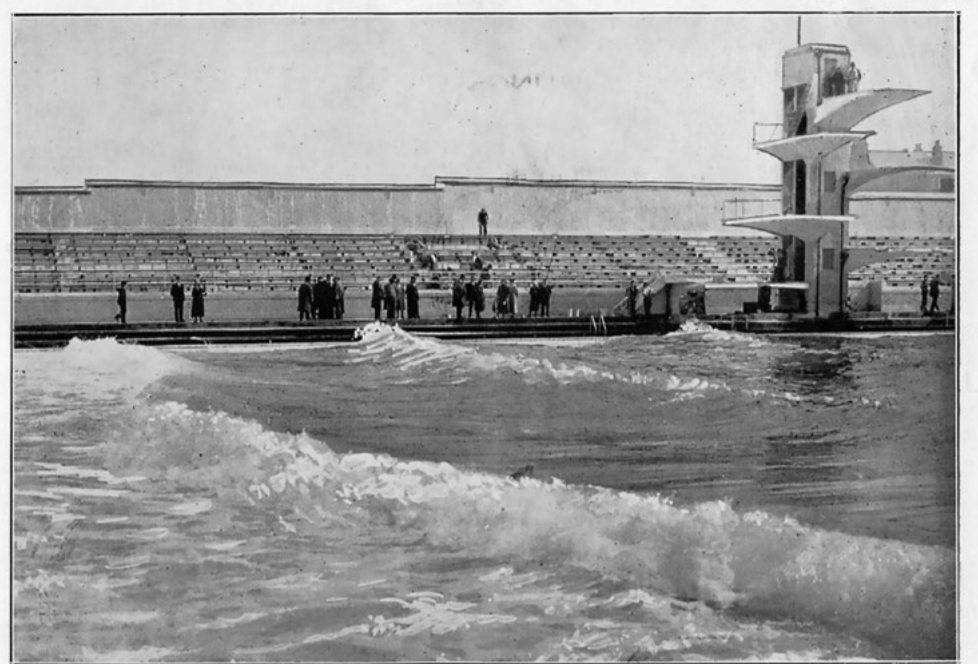
We extend an invitation to inspect our Large and Varied Stock of Up-to-date bathing requisites, comprising Ladies', Children's and Gent.'s Costumes, Caps, &c. Ladies' All Wool Costumes FROM 2/6

== == == ==

We would also remind you of our selection of Summer Frocks made of the Newest Materials and Latest Styles, also Blouses, Millinery, Hosiery and Gloves.

OUR KEEN PRICES WOULD INTEREST YOU

**JOHN BRYDON**  
224-226 High St. :: PORTOBELLO



ARTIFICIAL WAVES.

**PORTOBELLO** Open-Air Bathing Pool opened 80 years ago, on Saturday 30th May 1936. Lord Provost The Rt. Hon. Louis Gumley carried out the opening ceremony. Portobello Heritage Trust has a copy of the Official Souvenir Programme and the following details and photographs are taken from it.

**Lockers for 1,284 bathers**

The pool was in Rosebank Lane (now Westbank Street) on the site now occupied by the five-a-side football pitches,

Tumbles Gymnastics and Soft Play Centre. There were two entrances: one on the Promenade, which had a shop on either side and a public shelter, with two staircases leading to a lounge hall, restaurant and a spectators' promenade; the other entrance on Rosebank Lane was for bathers and spectators. There were lockers for 1,284 bathers and space for 6,000 spectators, including 2,000 seats under a covered stand. Examples of fashionable swim-wear can be seen in the above advertisement. Older readers will

remember the pitfalls of wearing a knitted swimming suit when it became water-logged!

**Springboards, chutes and waves**

The pool was 330 feet long and 150 feet wide, with the depth varying from one foot to 6 feet 6 inches. The water level could be raised so that the minimum depth was three feet. There was a diving area of 15 feet with five diving boards ranging from 12 feet to over 32 feet (10 metres) in height. There were also spring

boards, two chutes at the deep end and children's chutes at the shallow end. It was anticipated that the wave-making machine would be the most popular feature of the pool. It could make ripples, and waves up to 3 feet high, as seen in the above photograph. The water for the pool was heated to 68° Fahrenheit, although many bathers would have disputed that! Music could be broadcast, as could warnings that the waves were about to begin.

There was a programme of events to cel-

ebate the opening, with visiting swimming clubs participating in various races. There was also an International Water Polo Trial. W.E. (Ned) Barnie, from Portobello Amateur Swimming Club, was an official for the events.

The pool was open annually from May to September. Eventually the unpredictable Scottish weather and the fashion for foreign holidays took their toll on bathers' numbers and the pool closed in 1978. It was demolished in 1988.

Margaret Munro

**Malvarosa**  
Tapas as nature intended.

Open Monday & Wednesday to Saturday 12:00 to 22:00.  
Sunday 12:30 to 21:00

Spain is at the heart of Portobello.

Restaurant awarded by The List magazine and Tripadvisor.

262 Portobello High Street, EH15 2AT 0131 669 7711  
www.malvarosa.co.uk tapa@malvarosa.co.uk

**McALPINE JEWELLERS**  
Proprietor: Danny Smyth

Free Estimates and advice on all watch, clock and jewellery repairs.  
Watch straps and batteries fitted

**190 Portobello High Street**  
Tel. 669 4462

**10% off first month's fees\***  
\*On presentation of this advert when registering.

**kidzcare**  
Kidzcare @ Portobello  
2 Windsor Place, EH15 2AA, Edinburgh

**We have purchased Little VIP Nursery, Portobello**

Kidzcare is a well-established provider of nursery and out-of-school care in Edinburgh and operate 4 nurseries in partnership with the City of Edinburgh Council.

Kidzcare@Portobello boasts large, spacious playrooms and is in a prime location, close to local amenities; such as Portobello beach, the library and a variety of local parks.

For more information, check out our website [www.kidzcare.org](http://www.kidzcare.org) or call us direct on 0131 669 5040 for more information

**Mira's TAILORING & ALTERATIONS**  
32 Portobello High Street, EH15 1DD

We carry out alterations on all types of clothing and curtains.  
We also do made-to-measure and bespoke tailoring.

Open: Monday-Friday, 9am-5.30pm. Saturday, 10am-3pm.  
Tel: 0744 637 5589. email: [alterations.tailor@yahoo.co.uk](mailto:alterations.tailor@yahoo.co.uk)  
Facebook: Mira's Tailoring & Alterations

**ATLAS DECORATORS**

No job too large. No job too small

Call Andy Stevenson on 0131 657 2196  
Mob. 0771 163 8434 or e-mail: [atlasdecorators@hotmail.co.uk](mailto:atlasdecorators@hotmail.co.uk)

**36 Duddingston Road, Edinburgh EH15 1SF**



**in-house design**  
creative interior solutions

FREE initial home design consultation.  
quality curtains & soft furnishings.  
wide range of fabrics/wallpapers/  
unique handcrafted gifts.  
excellent upholstery service.

**322 portobello high street**  
[www.in-housedesign.biz](http://www.in-housedesign.biz)  
Tel 0131 669 4454 mob 07752592543

**James Scott (PORTOBELLO) Funeral Director**  
314 Portobello High Street, Edinburgh EH15 2DA  
Tel: 0131-669 1285 or 0131-669 6333  
[www.thomasmarin.co.uk](http://www.thomasmarin.co.uk)  
24 HOUR SERVICE

Pre-funeral planning available on request  
**Member of National Association of Funeral Directors**




**J.E.B. ELECTRICS**  
Your Local Electrician

Commercial and Domestic  
Small Jobs Welcome

Call James Blyth on  
669 2258 or 07879447396  
or email:  
[JELECTRICS@YAHOO.COM](mailto:JELECTRICS@YAHOO.COM)

**The Just World Shop**  
Fair Trading For A Just World  
54 Portobello High Street Tel 669 8819

For a selection of Traidcraft and other fairly traded goods including;

Tea • Cocoa • Sugar • Muesli • Dried Fruit • Nuts Rice  
• Pasta • Honey • Chocolate • Sweets & Snacks Gifts •  
Crafts • Jewellery • Cards • Stationery  
• Ecover & Recycled Products

Open: Monday-Friday 10am-12noon and 2pm-4pm. Saturday, 10am-12noon



## What's On

**PORTOBELLO MARKET:** Sat. 4th June, 9.30am-1.30pm, Brighton Park. Organic fruit, veg, plants, meat, bakery, crafts, coffee, snacks etc. For details or to book a stall, contact [portobello.market@live.co.uk](mailto:portobello.market@live.co.uk) Future dates: 2nd July, 6th Aug.

**PILATES:** Free classes: Sat. 11th June, Tribe Porty, Windsor Place: 9.30-10.15am, Trigger Point Pilates; 10.30-11.15am, Conquer Gravity. Book a place at: [sabrina@phpt.co.uk](mailto:sabrina@phpt.co.uk)

**CAR BOOT SALES:** (Rotary Club of Portobello). Sundays 26th June, 31st July, 28th Aug, 9am-2pm, Newcraighall Station car park. Cars arrive 8am, double pitch £10 - all fees to charity. Enquiries to 07789220583.

**PORTOBELLO AMMENITY SOC. AGM:** Thurs. 30th June, 7.30pm, Baptist Church Hall, Portobello High St. To be followed by a talk, *Changes in our local bird life - Portobello's Coast and Gardens*, by Den Mather of the Scottish Ornithologists' Club. All welcome.

**BIG BEACH BUSK:** Sat. 27th Aug. from 11am, Portobello Prom.

**BOTTLE ROCKET COMPETITION:** Sat. 27th Aug, 3.30pm, Portobello Beach. For details go to [www.porty.org.uk](http://www.porty.org.uk) and click Events.

**PORTOBELLO COMMUNITY CHOIR:** Weds, 7.15-9.30pm, Baptist Church Hall, 185 Portobello High St. £6/£4 concess. All welcome. Sing in harmony in a fun and relaxed environment. For details see [www.portobellocommunitychoir.org](http://www.portobellocommunitychoir.org)

**AFTERNOON DANCING:** Ballroom, sequence, line dancing, with Duncan McBain, Weds/Fridays, 1-4pm, £3 incl. refreshments. Beach Lane Social Club.

**VILLAGE SHOW:** Sunday 4th September, 2-5pm, Rosefield Park. Volunteers are more than welcome. For more information contact: [info@the-pod.org](mailto:info@the-pod.org) or see [www.the-pod.org](http://www.the-pod.org) or [Facebook](https://www.facebook.com/the-pod.org).

## POP-UP ARCHITECTURE

KONISHI Gaffney the Portobello based Architects were the winners of a recent competition to design a temporary pavilion as Edinburgh's entry to the Pop-Up Cities Expo, a headline event for the Festival of Architecture and part of the Year of Innovation Architecture and Design, to be held at the Mound from 17th June to 17th July. The competition was organised by the City of Edinburgh Council and the Edinburgh Architec-

tural Association, and the brief was for a pavilion intended as an aspirational 'snapshot' of Edinburgh, inspiring architects of the future.

Kieran Gaffney said: "We are delighted to have won this competition. Our idea is based on a folded origami form made from two pyramids laid back to back, with three openings pulled out, for windows and a door. The pavilion is intended for re-use at other events and functions".

## AMNESTY - LOCAL ACTION

THE annual Coffee and Book Sale on 19th March raised a record £667, which allowed the group to send £700 to Amnesty UK, in addition to the annual contribution of £72. Thanks are due to the Woodcraft Folk, Portobello Community Choir and the instrumental group for helping to create a lively atmosphere; and the Just World Shop, Sainsbury's Local and all who donated raffle prizes.

Our stall at Portobello Market in April focussed on the Human Rights Act, under threat of replacement by a weaker British version. A campaign to save the Act is being promoted by all Amnesty Groups in the UK, and the Scottish Parliamentary election provided an opportunity to test the attitudes of candidates.

At our April meeting we made coloured bunting to send to Burkino Faso, in support of women who have sought sanctuary in protective shelters from forced early marriage; the bunting was to decorate the shelters and express solidarity.

Following the unexpected closure of the Group's long-term case of a woman imprisoned in Uzbekistan for 15 years for her part in a peaceful demonstration, we have committed to long-term support of a Guatemalan woman environmental activist and human rights defender, Yolanda Oueli.

Our Group meetings are held on the second Monday of each month at 7.30pm in the coffee lounge of the former Bellfield church. Why not pay us a visit? For more information, email Theresa McMurtry at [smiley.laughran@gmail.com](mailto:smiley.laughran@gmail.com) or call 0131 669 0295.

David Turner

SUMMER! And your local community centre, Porty Wash House, continues to supply its weekly fare of education, exercise and entertainment for our growing populace. Classes range from art, language and music to physical activities for all ages, not to mention the extremely popular dog and puppy sessions for our four-legged friends.



On Tuesdays and Thursdays respectively, our early evening junior and senior Youth Clubs are blooming under the guidance of the amazing Lisa McLaren.

We also continue to host music and dance events and hope to bring you regular ceilidhs from the Ceilidh Collective [www.ceilidhcollective.org](http://www.ceilidhcollective.org) Edinburgh Youth Gaitherin's Big Band Performance is at 4.30pm on Saturday 4th June, supported by Fun Fiddle's young players, and we'll have more exciting musical news for the autumn.

Our AGM will take place at 7.30pm on Wednesday 22nd June and all are welcome to attend. The Wash House is one of the last available public halls in Portobello and we really need interested and motivated local folk to come on board and help keep us moving forward.

If you would like to hire space to run an activity, class or event, we have four rooms ranging from sports hall to midsize to intimate. Please contact the Facilities Co-ordinator on 0131 669 8275 or drop by at 3 Adelphi Grove EH15 1AP

Sooz Glen

## LOCAL GARDENS OPEN

ON Sunday 15th May, over 180 people visited five gardens in Brighton Place and East Brighton Crescent that were opened to the public under the Scotland's Gardens scheme. The event raised a total of £958 for various charities, including Maggie's Centre. Jim and Sue Hurford, whose garden was open, say: "It was fun to organize. It got

neighbours together, and gave gardeners incentives to finish long-planned projects; some newcomers discovered other delights of Portobello for the first time. There are many other areas in Portobello with interesting gardens meriting a group effort like this". Anyone interested should contact [www.scotlandsgardens.org](http://www.scotlandsgardens.org) for details.

## TIMEBANK CLEANS UP

PORTOBELLO Timebank has been very busy in the past three months, with membership growing strongly and more hours being swapped. The organisation has also carried out three clean-ups, covering Christian Path, Brunstane Burn and part of Magdalene Glen. Members and other volunteers have given over 250 hours of their time and made a huge impact, removing almost 100 cubic metres of rubbish, filling eight council trucks and a couple of tractor trailers: over 30 shopping trolleys, numerous bicycles, piles of carpet and an electric reclining armchair. The difference is incredible, so please do enjoy the much improved local nature spots. On Saturday 21st May the Timebank held a successful open day at Tribe Porty, showcasing what is on offer and how to get involved. On Saturday 4th June they will clear a strip of land next to Towerbank Primary School to help create a community garden. For more information see [www.portbellotimebank.co.uk](http://www.portbellotimebank.co.uk)

Kirsty Carver

### H.S.KIDD PHARMACY

330-332 PORTOBELLO HIGH STREET, EDINBURGH EH15 2DA  
0131-669 4331

See our range of skincare products including

**Dr Hauschka, Weleda, Eucerin, Avene, Burt's Bees, Bronnley & Yardley**

We also stock a wide range of suncare products and **Coloursport Lipsticks.**

We offer **FREE** prescription collection and delivery, blood pressure testing and stop smoking service.

## BRUNSTANE KITCHENS LTD

Designing and fitting kitchens and bedrooms locally for the past 25 years.

We also carry out:

- Worktop replacements in granite, solid surface, laminates, wood and stainless steel.
- Coloured splashbacks
- Bathrooms and shower rooms
- Sliding Glass Wardrobes

ALL TRADES CATERED FOR  
PLEASE CONTACT US FOR ADVICE AND ESTIMATES

**8 Brunstane Bank, 0131 657 2923**  
e-mail. [david@brunstanekitchens.co.uk](mailto:david@brunstanekitchens.co.uk)

## ROBIN T. BOND

CHARTERED ACCOUNTANT

ACCOUNTS • TAX RETURNS • CASH FLOW  
VAT • BUSINESS START UP • PHOTOCOPYING

22 JOPPA ROAD TEL: 0131 669 0442

### EDWIN VOLPE STONEMASON

SPECIALISING IN:  
DRESSING, RESTORATION,  
POINTING, RUBBLE,  
GARDEN WALLS, SLABBING.  
CALL FOR DETAILS.

TEL. MOB. 07813147343  
(0131) 620 1603  
email:

[edwinvolpestonemason@live.co.uk](mailto:edwinvolpestonemason@live.co.uk)

## PORTOBELLO ROOFING

All aspects of roofing work undertaken  
from a single slate to a new roof.

Free estimates and advice

Tel 0131 669 9163 or 077941 18594  
[www.portbelloroofing.co.uk](http://www.portbelloroofing.co.uk)

# FANTASTIC FOSSIL FIND



Photos by Michael Davenport

**LOCAL** journalist Jim Gilchrist was in Cromarty recently to receive a prize in the prose section of the Hugh Miller Writing Competition, which invited entries inspired by the writings of the celebrated, Cromarty-born self-taught pioneer geologist and journalist, who spent his last years in Portobello

While walking on the beach he picked up a stone bearing the best fossil fish anyone had seen from that beach for

decades - from the Devonian age and called Cheirolepis. "I thought I'd bring the stone back for the garden", Jim says, "but when I looked closer I saw the outline of a fish. Everyone was gob-smacked to find it just lying there. It was a nice connection to Hugh Miller and really made my day". The fossil, some 350-400 million years old, will stay in the Hugh Miller Museum in Cromarty.

# LUCKY TO BE A TOWN IN A CITY



**WHAT** makes us Porty? I think it is the love we share. There is a collective love for the breath-taking sunsets over the beach, cafés and shops full of characters and community champions, the daily school parade and the green spaces, to name just a few. Through that shared love, a type of graciousness

and warmth comes for fellow citizens. This warmth breeds more warmth and is what makes us as a community, whole. Portobello is lucky to be a town in a city. We have the best of both – a community small enough to feel connected, but with some anonymity.

We have all of the right ingredients here in Portobello: a strong community council, good local schools, access to space and change of scenery, local interests and investments in places to gather and, most of all, people who are proud to live here. We are a great community and we should keep feeding the good stuff and have this place known for its warmth and goodwill, which keeps feeding acts of kindness. If you need to be inspired, find your favourite Porty spot, turn off your phone and sit and watch people; notice their faces and imagine their life stories. Practice empathy, enjoy diversity and remember we are all in this together.

Dani Trudeau

Tribe Party, [www.tribeparty.org](http://www.tribeparty.org)

# JOURNEY LINES

'JOURNEY LINES', curated by Art Walk Porty, is a ScotRail funded project that will examine Portobello's relationship to the railway, from past to present. It will run from 4th August to 30th September. New artworks and installations will be created for Brunstane and Newcraighall Railway Stations, with an artist in residence on the Borders Railway. There will also be a sound installation at St Marks Church, and works at other locations in Portobello relating to journeying to the seaside. Look out for details.



Photo by Nigel Archdale

The recently restored Flying Scotsman locomotive steams through Brunstane station on its way to Tweedbank on Sunday 15th May, on its first return to Scotland in 16 years.

## The Portobello Reporter

is produced by volunteers, with 36 local people contributing to this issue. If you have something you would like to see in print or ask about ads call us on **669 3466** or email us at [portyreporter@btinternet.com](mailto:portyreporter@btinternet.com) **SEPTEMBER DEADLINE - 6TH AUG.**



## PORTOBELLO BLINDS

Quality, made to measure window blinds supplied and fitted at the best possible prices. Get in touch to arrange a home visit and no obligation quote - or visit our website to find out more.

Phone : 0131 669 4138  
Web : [www.portobelloblinds.co.uk](http://www.portobelloblinds.co.uk)

## places now available



Blossom Day Nursery 15b/c Bath Street, Portobello 0131.657 2233 [www.blossomdaynursery.com](http://www.blossomdaynursery.com)

## PIANO TUNING, SERVICE & REPAIR

Good rates - Free estimates  
Professional advice  
Call David Neill, HND  
Tel. 0131 258 2755  
Mob. 0759 889 9198  
(Baillie Terrace, EH15)

## ALEXANDERS JOINERY

A local, reliable and friendly service covering all aspects of joinery.

No job too small.  
Free estimates.

tel: 0131 669 1637  
mob: 07704506270  
or: 07791734711

## THE FINE WINE COMPANY

100+ Malt Whiskies – IJ Mellis Cheese  
Global Craft Beers & Local Real Ales  
Scottish Gins – Nationwide Delivery  
Order Online & Collect in Store.

[www.thefinewinecompany.co.uk](http://www.thefinewinecompany.co.uk)  
119 High Street, Portobello, EH15 1AR  
Mon – Tue 12-8pm, Wed – Sat. 10am-9pm.



Portobello's Independent  
Off-license Since 2007

## THERE'S A NEW NAME ON PORTOBELLO HIGH STREET



0131 258 4477

Email [info@portyexchange.co.uk](mailto:info@portyexchange.co.uk)

**PHYSICAL HEALTH PERSONAL TRAINING**  
[www.phpt.co.uk](http://www.phpt.co.uk)

Physical Health Pilates Studio

- Mat Fitness Pilates
- Mother & Baby Pilates
- Conquer Gravity Classes
- Private & Semi-Private Studio Pilates
- Postural Analysis included in your 1st Visit

Delivering Personalised Pilates with Professional Equipment in the Heart of Portobello

Book Your **FREE** Initial Consultation at:  
Call: 0792 2202 968  
Email: [sabrina@phpt.co.uk](mailto:sabrina@phpt.co.uk)  
Facebook: Pilates Studio  
- Physical Health Personal Training  
Web: [www.phpt.co.uk](http://www.phpt.co.uk)  
Pilates Studio, 19 windsor Place (Above Earthy)

**CAPITAL GAS AND HEATING SERVICES**

Specialists in:

- Installations and Repairs
- Landlords Reports
- Living Flame Fires
- Servicing and Plumbing

Baisi Service Agent  
Insurance Work Welcome  
Gas Safe Registered

0131-669 6462 Mob: 07831 406553  
21 Brunstane Drive, Edinburgh EH15 2NF

## CALEDONIAN CHALLENGE

LOCAL author Doug Johnston, and four others – Christopher Brookmyre, Matt Bendoris, Craig Robertson and Gordon Brown, will be part of a Bloody Scotland team walking 24 miles in 12 hours through Glen Coe on June 11th. They will be raising money for Foundation Scotland. To donate go to: [www.caledonianchallenge.com/teams/BloodyScotland](http://www.caledonianchallenge.com/teams/BloodyScotland)

## BEACH VOLLEYBALL

THIS year's Edinburgh Beach Volleyball Championships will be held at Portobello on 18th and 19th June: Men 2v2, Women 2v2, Boys 2v2 and Girls 2v2 matches will be played on Saturday 18th, the Open Mixed 2v2 and 4v4 matches on Sunday 19th.

# IN THE SADDLE



A beautiful sunny day as the cyclists pedal alongside Gladsmuir Reservoir.

**PORTOVELO**, the Portobello cycling club, is now four years old. In that time, it has built up a core group of perhaps 25 riders who turn up regularly for Sunday rides, plus many others who come along occasionally. It's a great way to explore the countryside and get fitter, in a friendly and supportive atmosphere. We always welcome new members - all you need is a road bike and a willingness to give it a try. If the weekly "fitness" rides are longer or faster than you are looking for, you could try one of our leisure rides on the first Sunday of each month. Like the fitness rides, these are led by an experienced cyclist who can manage the pace to suit a range of abilities, and include a café stop. We also organise occasional family rides, suitable for all ages and abilities - a great way to get the children out on their bikes!

For many Portovelo members, the highlight of the summer is the annual Portovelo 'weekender'. This year, a large group will be heading south in mid-June for two days of challenging cycling in the Yorkshire Dales - look out for a report in the next edition of the *Reporter*. Meanwhile, find out more at [www.porto-velo.com](http://www.porto-velo.com), or find us on Facebook or Twitter.

Andrew Mylne

## Gemma's Gym

THE months are just flying by. I hope, as always, that you are achieving what you want at the gym. You might find yourself outside more now, as we have light nights and hopefully warm weather. As a gym instructor, I do find myself encouraging people to get outside while they can. Gyms are great and definitely have a role to play, but there's nothing better than being out in the fresh air.

It is important to stay strong and gyms do have a role. The term 'strong', can mean a multitude of things to different people. I'm thinking strong as in your body, which as we know includes muscles, ligaments, tendons and bones. Keeping all of these strong can be achieved through weight-bearing exercises, the most basic being using your own body weight. The next step would be using weights, which could include dumb-bells or fixed weights. Using this kind of equipment can have a certain stigma - "only men who wish to be 'Big', need to use them" - but this is most definitely not the case.

Looking after your bones and joints and living an active life style are crucial as you age. Changing how you do things has to be taken into account and, by mixing your routine, your body will have to adapt and change for the better.

As always, I suggest that you get some advice from gym instructors.

Gemma Hopewell

## ON THE COURTS

THE Joppa Tennis courts have been cleaned and new lines laid and the season is up and running. Pay and Play for non-members will be in operation again during the summer holidays when the courts will be supervised. This is an ideal time to have a taster session or introduce the children to tennis.

We have a new coach, Finn McLean, who has just completed his coaching certificate. He will be running coaching sessions on Friday 10th June, and then in blocks. You can contact him on [finnmcleantennis@gmail.com](mailto:finnmcleantennis@gmail.com)

We now have a Tennis Ladder, open for all members, where matches can be booked in advance. Details are on our Facebook page.

Membership fees have been held at last year's rate: £65 family and £40 single member.

Do come along and have a go. You will be made very welcome.

Marjorie Thomas

## RUN IN THE PARK

**PORTOBELLO** parkrun, Edinburgh celebrated its first birthday on 16th April in Figgate Park, when a record 324 runners crossed the finish line. The parkrun organisation offers free, weekly, timed 5k runs all over the world, organised by volunteers. We regularly have over 200 taking part each Saturday in Portobello, and have seen a real community of runners develop. We are also an Approved Activity Provider for the Duke of Edinburgh Awards scheme.

The most important message about parkrun is that it's a run, not a race. We provide a time, but it's a time for an individual to beat - it's you against the clock. We promise a fun, friendly event. If you want to join in, come along at 9.30am and bring with you the personal barcode that you will get after registering at [www.parkrun.org.uk/register](http://www.parkrun.org.uk/register) For more details see our Facebook page.

Ciara Webb, event director

## T.A.Harris & Son

A FAMILY RUN COMPANY  
Established 1957

SERVICING & REPAIRS  
MOT TESTING STATION  
COMPETITIVELY PRICED  
BRAKES AND EXHAUSTS



T.A. HARRIS

A member of the tyre expert network-



LuK  
Aftermarket-Service Ltd  
Light Clutch Division

9-1 BELLFIELD LANE, PORTOBELLO  
EDINBURGH EH15 2BL  
TEL: 0131 669 5995

## ORMELIE TAVERN

44 Joppa Road, Portobello  
Tel: 0131-669 3323

Opening Hours:  
Mon to Sat 11am to 12 midnight  
Sun 12.30 pm to 11pm

AN EVER CHANGING  
RANGE OF  
CASK-CONDITIONED ALES

Timothy Taylors Hadrian & Border  
Caledonian Brewery Belhaven  
Harviestoun McEwans

OVER 60 MALT WHISKIES  
35ml measure

FILLED ROLLS & SNACKS  
AVAILABLE

## ACORN SERVICES

Builders Roofing Joiners Plumbers Electricians Gas fitters Plasterers Painters  
Building drying Fire & flood damage Locksmiths Masonry works Glazing Tiling

- All building maintenance works undertaken
- Free estimates & advice for insurance claims
- Edinburgh, Lothians, Borders & Fife
- 24 Hour emergency call outs
- All works fully guaranteed
- All trades available in house
- Extensions, loft conversions, refurbishments, bathrooms & kitchens

Tel: 0131 669 5222

info@acornservices.com www.acornservices.com

242 Portobello High Street, Edinburgh, EH15 2AT

## PORTOBELLO OPTICS

FREE EYE EXAMINATIONS

A CHOICE OF FREE SPECTACLES IF IN RECEIPT  
OF CERTAIN NHS BENEFITS Call for details

(Selected frames & standard lines only)

10% OFF complete spectacles until end of July  
only with this voucher.

172 Portobello High Street  
657 9899